



DATA | ENGINEERING | ROAD SAFETY - TECHNOLOGY

ITSLENZ

Unified Platform for Intelligent Traffic Enforcement

OVERVIEW:

ITSLenz is an intelligent, AI-driven ITS platform that unifies traffic management, enforcement, and surveillance into a single integrated system. By seamlessly connecting field devices, analytics, and enforcement workflows, it delivers real-time visibility, automated violation management, actionable insights, and intelligent alerts through one unified interface.

KEY FEATURES

> Unified Video Monitoring

High-precision vehicle recognition for automated violation enforcement, e-ticket generation, traffic counting, and classification.

> Violation Management & e-Ticketing

Capture, validate, and approve violations with image or GIF evidence, integrated directly with the e-Ticketing system.

> Intelligent Enforcement Tools

Configure VMS speeds, monitor violations, and enable sectional speed enforcement

> Actionable Analytics

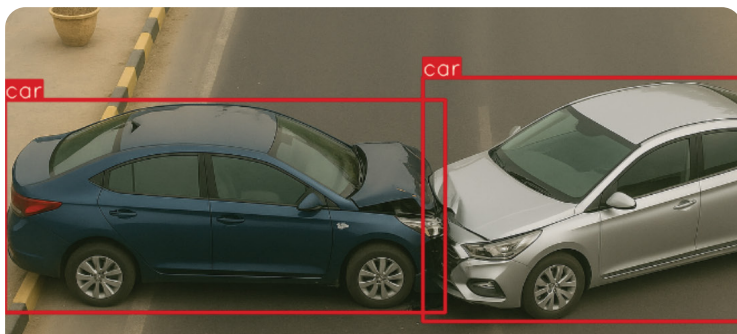
Gain insights into traffic counts, violations, and vehicle patterns through exportable, evidence-based reports.

> Instant Smart Alerts

Receive alerts for accidents, stalled vehicles, fog, debris, and hot-listed vehicles via web, mobile, and WhatsApp.

> Vehicle Trajectory Tracking

Trace and analyze vehicle movement across multiple checkpoints with proof-linked analytics.



Incident Detection



Violation Detection



ITSLENZ

Smart Alerts



e-Ticketing Portal



PTZ Cameras



Handheld Device



RLVD



AI-Powered Sensor



VMS



ANPR/ALPR Camera



4D Radar Interceptor



Bike Interceptor

